

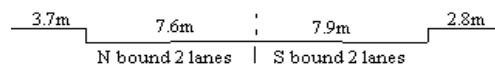
YEAR 2016

CORE STATION 1108

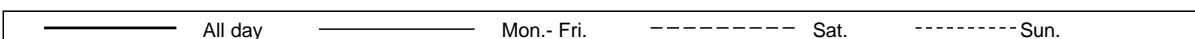
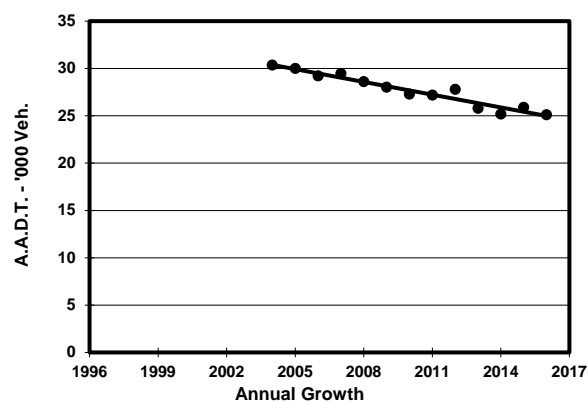
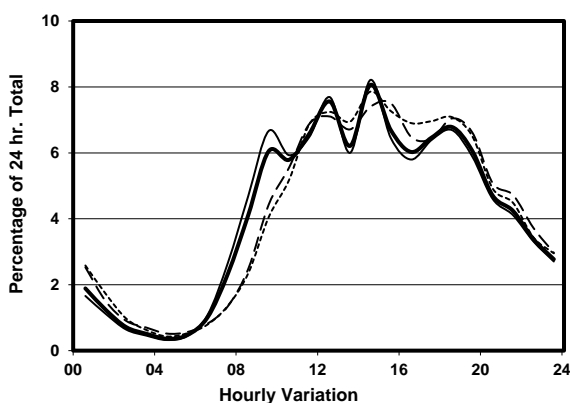
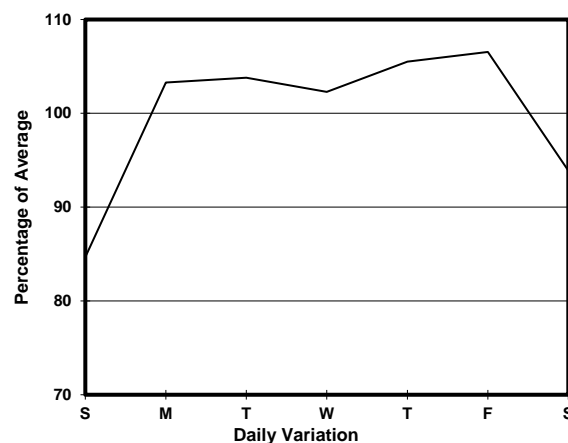
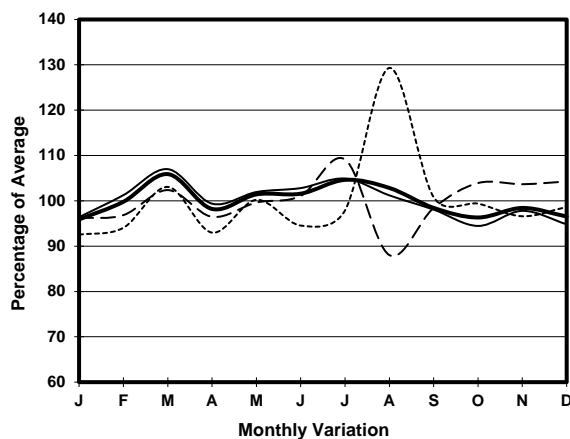
ROAD NETWORK MINOR

ROAD TYPE LOCAL DISTRIBUTOR

LINK JUSTICE DRIVE (from QUEENSWAY to SUPREME COURT RD)



1. TRAFFIC FLOW VARIATION AND GROWTH



2. TRAFFIC CHARACTERISTICS (BY DIRECTION)

| Parameter | All - Day | Mon. - Fri. | Sat. | Sun. |
|--------------------------------------|-----------|-------------|-----------|-----------|
| SOUTH BOUND | | | | |
| A.A.D.T. | 12660 | 13370 | 11830 | 10690 |
| R 12 / 24 - % | 74.4 | 75.3 | 70.9 | 72.6 |
| R 16 / 24 - % | 91.5 | 91.9 | 90 | 90.1 |
| AM Peak Hour | 0900-1000 | 0900-1000 | 0900-1000 | 0900-1000 |
| One-way flow at AM peak hour | 830 | 960 | 590 | 490 |
| T - % (AM) | - | - | - | - |
| PM Peak Hour | 1800-1900 | 1800-1900 | 1800-1900 | 1800-1900 |
| One-way flow at PM peak hour | 860 | 900 | 810 | 780 |
| T - % (PM) | - | - | - | - |
| Prop.of commercial vehicles - 16 hr. | - | - | - | - |
| NORTH BOUND | | | | |
| A.A.D.T. | 12440 | 13050 | 11970 | 10620 |
| R 12 / 24 - % | 70.9 | 72 | 67.8 | 67.6 |
| R 16 / 24 - % | 90.6 | 91.2 | 89 | 88.7 |
| AM Peak Hour | 0900-1000 | 0900-1000 | 0900-1000 | 0900-1000 |
| One-way flow at AM peak hour | 690 | 800 | 470 | 370 |
| T - % (AM) | - | - | - | - |
| PM Peak Hour | 1800-1900 | 1800-1900 | 1800-1900 | 1600-1700 |
| One-way flow at PM peak hour | 840 | 860 | 870 | 780 |
| T - % (PM) | - | - | - | - |
| Prop.of commercial vehicles - 16 hr. | - | - | - | - |

3. OTHER INFORMATION AND COMMENT